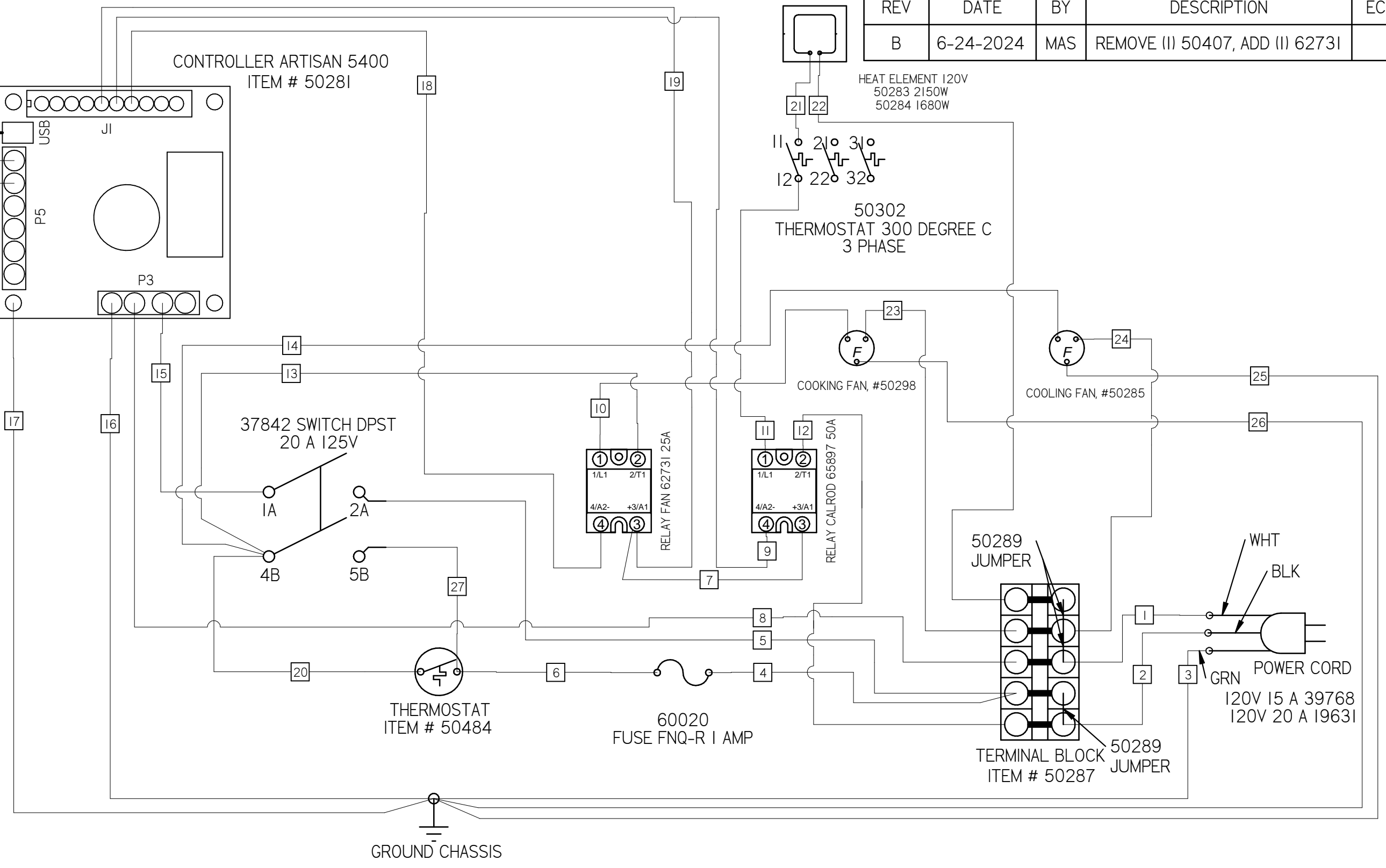


REV	DATE	BY	DESCRIPTION	ECO #
B	6-24-2024	MAS	REMOVE (I) 50407, ADD (II) 62731	



WIRE#	DESC.
1	POWER CORD
2	POWER CORD
3	POWER CORD
4	18 GA BLK
5	18 GA BLK
6	18 GA BLK
7	18 GA BLK
8	18 GA BLK
9	18 GA BLK
10	18 GA BLK
11	10 GA BLK
12	10 GA BLK
13	18 GA BLK
14	18 GA BLK
15	18 GA BLK
16	18 GA GRN
17	18 GA GRN
18	18 GA BLK
19	18 GA BLK
20	18 GA BLK
21	10 GA BLK
22	10 GA BLK
23	18 GA BLK
24	18 GA BLK
25	18 GA GRN
26	18 GA GRN
27	18 GA BLK

HIX Corporation 1201 E 27th Terrace, Pittsburg, KS 66762 Phone (620) 231-8568 Fax (620) 231-1598 Email: mail@hixcorp.com www.hixcorp.com <small>This document and the information contained herein is the sole property of HIX Corporation. It will be held confidentially and may not be disclosed to third parties for any reason without prior written consent of HIX Corporation (Copyright 2005)</small>		TITLE WIRING DIAGRAM 120V 15 / 20 AMP GF 2	
Tolerance Unless Noted 0 +/- .060 .00 +/- .030 .000 +/- .010 FRACTION +/- 1/32 ANGLES +/- 1 DEGREE		Drawn MSCHULTZ Checked Date 3-15-2024	DWG NO 5026000 REV B
DO NOT SCALE		Project GF 2 SIZE B SHEET 1 OF 1	